

REF. 2040 - 2041



**Válvula macho esférico INOX furo reduzido 3 vias**

**Art. 2040: Furo tipo T**

Const.: AISI 316 - 4 sedes PTFE+FV. corpo e juntas do eixo: eixo tórido PTFE Viton. Extremidades: Rosca gas ISO 7-1 (EN 10226-1). PN 63. Temp. -25°C +180°C. Montagem direta S / ISO 5211. Controle de alavanca manual com sistema de travamento.

**3 Ways ball valve reduced bore**

**Art. 2040: "T" bore**

Const.: AISI 316; Four seats PTFE + GF body and stem seats: PTFE o'ring stem: Viton. Gas threaded ends ISO 7-1 (EN 10226-1). PN 63. Temp. -25°C +180°C. Direct assembling S/ISO 5211. Manually operated by handle with locking system.

F204002CHMO	6	1/4"
F204003CHMO	10	3/8"
F204004CHMO	12	1/2"
F204005CHMO	20	3/4"
F204006CHMO	25	1"
F204007CHMO	32	1 1/4"
F204008CHMO	38	1 1/2"
F204009CHMO	50	2"
F204010CHMO	65	2 1/2"

F204002ESGE	6	1/4"
F204003ESGE	10	3/8"
F204004ESGE	12	1/2"
F204005ESGE	20	3/4"
F204006ESGE	25	1"
F204007ESGE	32	1 1/4"
F204008ESGE	38	1 1/2"
F204009ESGE	50	2"
F204010ESGE	65	2 1/2"

F2040N02ESGE	6	1/4"
F2040N03ESGE	10	3/8"
F2040N04ESGE	12	1/2"
F2040N05ESGE	20	3/4"
F2040N06ESGE	25	1"
F2040N07ESGE	32	1 1/4"
F2040N08ESGE	38	1 1/2"
F2040N09ESGE	50	2"
F2040N10ESGE	65	2 1/2"



**VVálvula macho esférico INOX furo reduzido 3 vias**

**Art. 2041: Furo tipo L**

Const.: AISI 316 - 4 sedes PTFE+FV. corpo e juntas do eixo: eixo tórido PTFE Viton. Extremidades: Rosca gas ISO 7-1 (EN 10226-1). PN 63. Temp. -25°C +180°C. Montagem direta S / ISO 5211. Controle de alavanca manual com sistema de travamento.

**3 Ways ball valve reduced bore**

**Art. 2041: "L" bore**

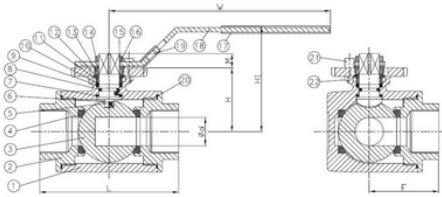
Const.: AISI 316; Four seats PTFE + GF body and stem seats: PTFE o'ring stem: Viton. Gas threaded ends ISO 7-1 (EN 10226-1). PN 63. Temp. -25°C +180°C. Direct assembling S/ISO 5211. Manually operated by handle with locking system.

F204102CHMO	6	1/4"
F204103CHMO	10	3/8"
F204104CHMO	12	1/2"
F204105CHMO	20	3/4"
F204106CHMO	25	1"
F204107CHMO	32	1 1/4"
F204108CHMO	38	1 1/2"
F204109CHMO	50	2"
F204110CHMO	65	2 1/2"

F204102ESGE	6	1/4"
F204103ESGE	10	3/8"
F204104ESGE	12	1/2"
F204105ESGE	20	3/4"
F204106ESGE	25	1"
F204107ESGE	32	1 1/4"
F204108ESGE	38	1 1/2"
F204109ESGE	50	2"
F204110ESGE	65	2 1/2"

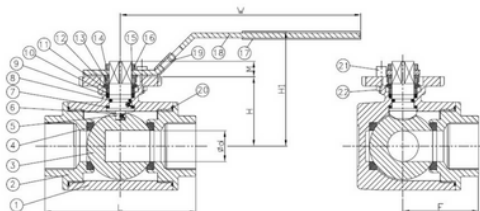
F2041N02ESGE	6	1/4"
F2041N03ESGE	10	3/8"
F2041N04ESGE	12	1/2"
F2041N05ESGE	20	3/4"
F2041N06ESGE	25	1"
F2041N07ESGE	32	1 1/4"
F2041N08ESGE	38	1 1/2"
F2041N09ESGE	50	2"
F2041N10ESGE	65	2 1/2"

REF. 2040 - 2041



**DIMENSÕES**

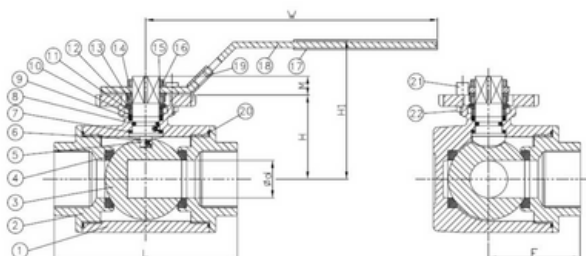
REF.	REF.	MEDIDA	PN	d	L	H	H1	W	M	F	CxC	ISO 5211	PESO (g)
2040 02	2040N 02	1/4"	63	9,5	75	37	66	130	8	37	9 x 9	F03/F04	0,700
2040 03	2040N 03	3/8"	63	11	75	37	66	130	8	37	9 x 9	F03/F04	0,670
2040 04	2040N 04	1/2"	63	12	75	37	66	130	8	37	9 x 9	F03/F04	0,630
2040 05	2040N 05	3/4"	63	15	85	41	72	161	12	42	11 x 11	F04/F05	0,950
2040 06	2040N 06	1"	63	20	100	47	77	161	12	50	11 x 11	F04/F05	1,400
2040 07	2040N 07	1 1/4"	63	25	122	56	92	203	12	61	14 x 14	F05/F07	2,900
2040 08	2040N 08	1 1/2"	63	32	131	60	96	203	12	65	14 x 14	F05/F07	3,600
2040 09	2040N 09	2"	63	40	158	71	107	203	12	79	14 x 14	F05/F07	6,250
2040 10	2040N 10	2 1/2"	63	49	178	95	135	254	14	89	17 x 17	F07/F10	8,950



**DIMENSÕES**

REF.	REF.	MEDIDA	PN	d	L	H	H1	W	M	F	CxC	ISO 5211	PESO (g)
2041 02	2041N 02	1/4"	63	9,5	75	37	66	130	8	37	9 x 9	F03/F04	0,700
2041 03	2041N 03	3/8"	63	11	75	37	66	130	8	37	9 x 9	F03/F04	0,670
2041 04	2041N 04	1/2"	63	12	75	37	66	130	8	37	9 x 9	F03/F04	0,630
2041 05	2041N 05	3/4"	63	15	85	41	72	161	12	42	11 x 11	F04/F05	0,950
2041 06	2041N 06	1"	63	20	100	47	77	161	12	50	11 x 11	F04/F05	1,400
2041 07	2041N 07	1 1/4"	63	25	122	56	92	203	12	61	14 x 14	F05/F07	2,900
2041 08	2041N 08	1 1/2"	63	32	131	60	96	203	12	65	14 x 14	F05/F07	3,600
2041 09	2041N 09	2"	63	40	158	71	107	203	12	79	14 x 14	F05/F07	6,250
2041 10	2041N 10	2 1/2"	63	49	178	95	135	254	14	89	17 x 17	F07/F10	8,720

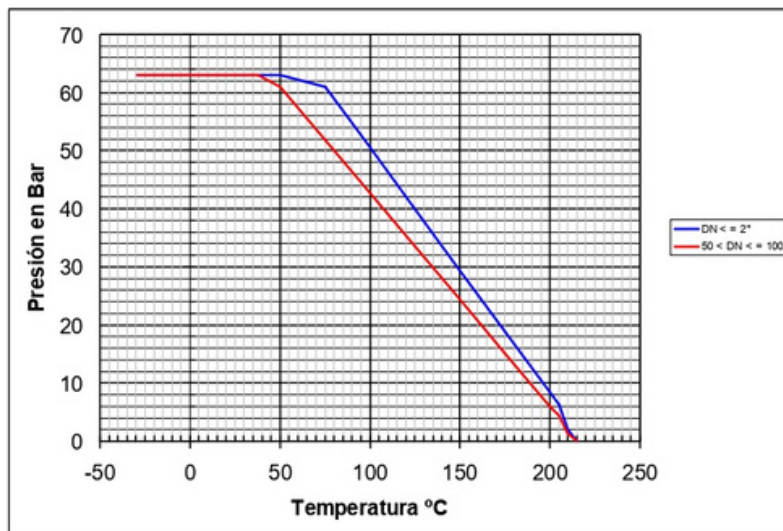
REF. 2040 - 2041



Nº	Denominação	Material	Tratamento Superficial	Referência do KIT
1	Corpo	Aço INOX	Jateamento	-----
2	Tampa	Aço INOX	Jateamento	-----
3	Bola	Aço INOX	-----	2841
4	Assento da Bola	PTFE + 15% F.V.	-----	2819
5	Haste	Aço INOX	-----	-----
6	Dispositivo Anti Estático	Aço INOX	-----	-----
7	Anel de Fricção	PTFE	-----	2819
8	O'Ring	FKM	-----	2819
9	Embalagem	PTFE	-----	2819
10	Casquilho	Aço INOX + PTFE	-----	-----
11	Gland	Aço INOX	-----	-----
12	Anilha Elástica	Aço INOX	-----	-----
13	Porca	ASTM A194-8	-----	-----
14	Anilha Anti Rotação	Aço INOX	-----	-----
15	Anilha	Aço INOX	-----	-----
16	Porca da Alavanca	Aço INOX	-----	-----
17	Manga da Alavanca	Vinil	-----	-----
18	Alavanca	Aço INOX	-----	-----
19	Dispositivo de Bloqueio	Aço INOX	-----	-----
20	Junta	PTFE	-----	2819
21	Parafuso de Paragem	Aço INOX	-----	-----
22	Porca	ASTM A194-8	-----	-----

REF. 2040 - 2041

## CURVA DE TEMPERATURA DE PRESSÃO



### Valores de Kv

Kv = É o número de metros cúbicos por hora (m<sup>3</sup>/h) que irá gerar uma queda de pressão de 1 bar através da válvula.

MEDIDA	Z	3/8"	1/2"	3/4"	1"	1 1/4"	1 1/2"	2"	2 1/2"
m <sup>3</sup> /h	11	11	13	15	31	39	62	103	205