

REF. 0149



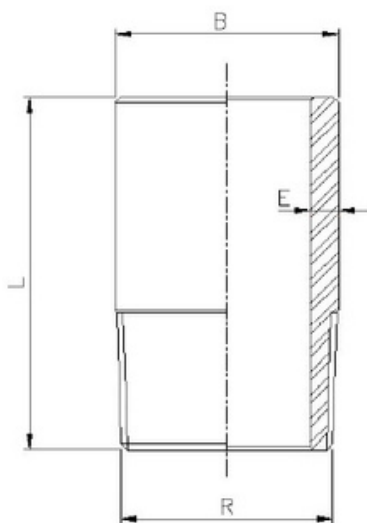
Ponta para soldar roscada
(macho) AISI 316 - Rosca BSP

Welding-M nipple

F014902ESGE	8	1/4"
F014903ESGE	10	3/8"
F014904ESGE	15	1/2"
F014905ESGE	20	3/4"
F014906ESGE	25	1"
F014907ESGE	32	1 1/4"
F014908ESGE	40	1 1/2"
F014909ESGE	50	2"
F014910ESGE	65	2 1/2"
F014911ESGE	80	3"
F014912ESGE	100	4"

F014905CHQI	20	3/4"
F014906CHQI	25	1"
F014908CHQI	40	1 1/2"
F014909CHQI	50	2"
F014910CHQI	65	2 1/2"
F014911CHQI	80	3"
F014912CHQI	100	4"

F14902CHMO	8	1/4"
F14903CHMO	10	3/8"
F14904CHMO	15	1/2"
F14905CHMO	20	3/4"
F14906CHMO	25	1"
F14907CHMO	32	1 1/4"
F14908CHMO	40	1 1/2"
F14909CHMO	50	2"
F14910CHMO	65	2 1/2"
F14911CHMO	80	3"
F14912CHMO	100	4"



DIMENSÕES

REF.	REF.	MEDIDA	B	E	L
0092 02	0092N 02	1/4"	13,7	2,24	30
0092 03	0092N 03	3/8"	17,1	2,31	30
0092 04	0092N 04	1/2"	21,3	2,77	35
0092 05	0092N 05	3/4"	26,7	2,87	40
0092 06	0092N 06	1"	33,4	3,38	40
0092 07	0092N 07	1 1/4"	42,2	3,56	50
0092 08	0092N 08	1 1/2"	48,3	3,68	50
0092 09	0092N 09	2"	60,3	3,91	50
0092 10	0092N 10	2 1/2"	76,1	5,16	60
0092 11	0092N 11	3"	88,9	5,49	70
0092 12	0092N 12	4"	114,3	6,02	80