

REF. 0290 - 0290N



Tampão macho AISI 316 - Rosca BSP

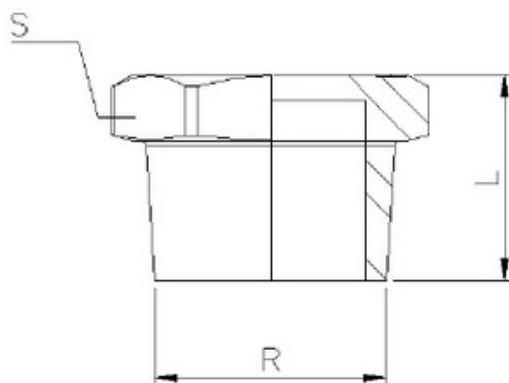
Plug BSP thread

Also available with NPT thread (Ref. 0290N)

F029002ESGE	8	1/4"
F029003ESGE	10	3/8"
F029004ESGE	15	1/2"
F029005ESGE	20	3/4"
F029006ESGE	25	1"
F029007ESGE	32	1 1/4"
F029008ESGE	40	1 1/2"
F029009ESGE	50	2"
F029010ESGE	65	2 1/2"
F029011ESGE	80	3"

F29002CHMO	8	1/4"
F29003CHMO	10	3/8"
F29004CHMO	15	1/2"
F29005CHMO	20	3/4"
F29006CHMO	25	1"
F29007CHMO	32	1 1/4"
F29008CHMO	40	1 1/2"
F29009CHMO	50	2"
F029010CHQI	65	2 1/2"
F029011CHQI	80	3"

F0290N02ESGE	8	1/4"
F0290N03ESGE	10	3/8"
F0290N04ESGE	15	1/2"
F0290N05ESGE	20	3/4"
F0290N06ESGE	25	1"
F0290N07ESGE	32	1 1/4"
F0290N08ESGE	40	1 1/2"
F0290N09ESGE	50	2"
F0290N10ESGE	65	2 1/2"
F0290N11ESGE	80	3"



			DIMENSÕES	
REF.	REF.	MEDIDA	L	S
0290 02	0290N 02	1/4"	14,5	15
0290 03	0290N 03	3/8"	16	18
0290 04	0290N 04	1/2"	19,5	23
0290 05	0290N 05	3/4"	21	28
0290 06	0290N 06	1"	24	35
0290 07	0290N 07	1 1/4"	27	44
0290 08	0290N 08	1 1/2"	27	50
0290 09	0290N 09	2"	32	62
0290 10	0290N 10	2 1/2"	34	77
0290 11	0290N 11	3"	37,5	90