

REF. 0300 - 0300N



Tampão fêmea AISI 316 - Rosca BSP

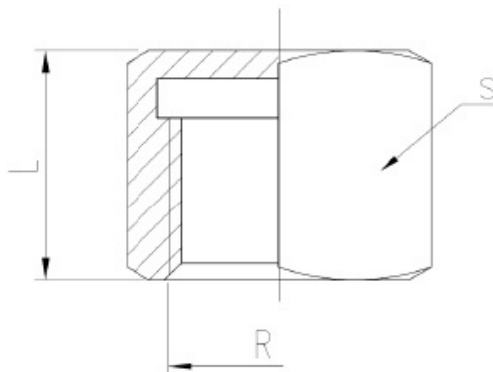
Cap BSP thread

Also available with NPT thread (Ref. 0300N).

F030002ESGE	8	1/4"
F030003ESGE	10	3/8"
F030004ESGE	15	1/2"
F030005ESGE	20	3/4"
F030006ESGE	25	1"
F030007ESGE	32	1 1/4"
F030008ESGE	40	1 1/2"
F030009ESGE	50	2"
F030010ESGE	65	2 1/2"
F030011ESGE	80	3"
F030012ESGE	100	4"

F0300N02ESGE	8	1/4"
F0300N03ESGE	10	3/8"
F0300N04ESGE	15	1/2"
F0300N05ESGE	20	3/4"
F0300N06ESGE	25	1"
F0300N07ESGE	32	1 1/4"
F0300N08ESGE	40	1 1/2"
F0300N09ESGE	50	2"
F0300N10ESGE	65	2 1/2"
F0300N11ESGE	80	3"
F0300N12ESGE	100	4"

F30002CHMO	8	1/4"
F30003CHMO	10	3/8"
F30004CHMO	15	1/2"
F30005CHMO	20	3/4"
F30006CHMO	25	1"
F30007CHMO	32	1 1/4"
F30008CHMO	40	1 1/2"
F30009CHMO	50	2"
F30010CHMO	65	2 1/2"
F30011CHMO	80	3"
F30012CHMO	100	4"



			DIMENSÕES	
REF.	REF.	MEDIDA	L	S
0300 02	0300N 02	1/4"	14	18
0300 03	0300N 03	3/8"	14,5	20
0300 04	0300N 04	1/2"	18,5	25
0300 05	0300N 05	3/4"	19,5	30
0300 06	0300N 06	1"	22,5	38
0300 07	0300N 07	1 1/4"	25,5	47
0300 08	0300N 08	1 1/2"	25,5	53
0300 09	0300N 09	2"	30	66
0300 10	0300N 10	2 1/2"	35	82
0300 11	0300N 11	3"	38,5	96
0300 12	0300N 12	4"	45	122