

REF. 0400



Tipo de encaixe A: Macho Camlock - Rosca fêmea ISO 7-1 (EN 10226-1)

Material AISI 316.

Pressão máx. pressão de trabalho: 10 bar (150 PSI).

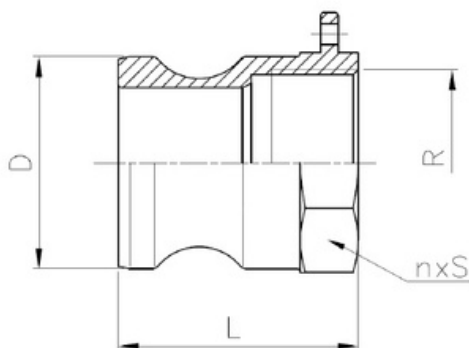
Fitting Type A: Male Camlock - Female Thread ISO 7-1 (EN 10226-1)

Material AISI 316.

Max. working pressure: 10 bar (150 psi).

F040004ESGE	15	1/2"
F040005ESGE	20	3/4"
F040006ESGE	25	1"
F040007ESGE	32	1 1/4"
F040008ESGE	40	1 1/2"
F040009ESGE	50	2"
F040010ESGE	65	2 1/2"
F040011ESGE	80	3"
F040012ESGE	100	4"

F001A15CHMO	15	1/2"
F001A19CHMO	20	3/4"
F001A25CHMO	25	1"
F001A32CHMO	32	1 1/4"
F001A40CHMO	40	1 1/2"
F001A50CHMO	50	2"
F001A65CHMO	65	2 1/2"
F001A80CHMO	80	3"
F001A100CHMO	100	4"



		DIMENSÕES		
REF.	MEDIDA	D	L	n x S
0400 04	1/2"	23,8	36	8 x 26
0400 05	3/4"	32	35	8 x 34
0400 06	1"	36,7	44	8 x 38
0400 07	1 1/4"	45,5	51	8 x 48
0400 08	1 1/2"	53,5	53	8 x 56
0400 09	2"	63	60	10 x 66
0400 10	2 1/2"	75,8	76	10 x 81
0400 11	3"	91,5	67	12 x 95
0400 12	4"	119,5	71	12 x 122