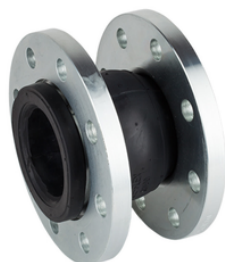


REF. 2831



Expansão de borracha - junta-onda única

Corpo EPDM. Flanges zincadas DIN PN 10. Pressão do trabalho. Máx.: 10 BAR. Temp: -10°C + 105°C.

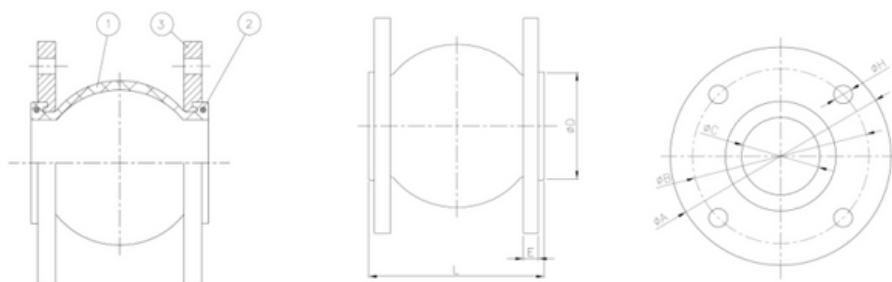
Rubber expansion - joint-single wave

Body: EPDM. Zinc plated DIN PN 10 flanges.

Max. working pressure: 10 BAR. Temp. -10°C +105°C.

F283107ESGE	32	1 1/4"
F283108ESGE	40	1 1/2"
F283109ESGE	50	2"
F283110ESGE	65	2 1/2"
F283111ESGE	80	3"
F283112ESGE	100	4"
F283113ESGE	125	5"
F283114ESGE	150	6"
F283116ESGE	200	8"
F283118ESGE	250	10"
F283120ESGE	300	12"
F283122ESGE	350	14"
F283124ESGE	400	16"
F283126ESGE	450	18"
F283128ESGE	500	20"

F283107CHHE	32	1 1/4"
F283108CHHE	40	1 1/2"
F283109CHHE	50	2"
F283110CHHE	65	2 1/2"
F283111CHHE	80	3"
F283112CHHE	100	4"
F283113CHHE	125	5"
F283114CHHE	150	6"
F283116CHHE	200	8"
F283118CHHE	250	10"
F283120CHHE	300	12"



Nº	Descrição	Material	Tratamento Superficial
1	Corpo	EPDM + Nylon	-----
2	Anel	Aço Carbono	Zincado
3	Flange	Aço Carbono	Zincado

MEDIDA	DN	PN	DIMENSÕES (mm)							PESO (Kg)
			Ø A	Ø B	Ø C	Ø D	n x Ø H	L	E	
1 1/4"	32	16	140	100	32	69	4 x 18	95	16	2.86
1 1/2"	40	16	150	110	40	69	4 x 18	95	16	3.24
2"	50	16	165	125	52	86	4 x 18	105	16	4.10
2 1/2"	65	16	185	145	68	106	4 x 18	115	16	4.87
3"	80	16	200	160	76	126	8 x 18	130	18	6.20
4"	100	16	220	180	103	150	8 x 18	135	18	6.80
5"	125	16	250	210	128	180	8 x 18	170	20	9.50
6"	150	16	285	240	152	209	8 x 23	180	22	12.40
8"	200	16	340	295	194	260	8 x 23	200	22	16.86
10"	250	16	395	350	250	320	12 x 23	240	24	21.20
12"	300	16	445	400	300	367	12 x 23	260	24	28.10
14"	350	10	505	460	320	408	16 x 23	265	26	36.70
16"	400	10	565	515	372	472	16 x 18	265	26	44.40
18"	450	10	615	565	415	522	20 x 28	265	26	46.80
20"	500	10	670	620	454	570	20 x 28	265	28	59.00

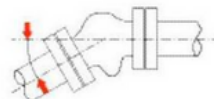
DIAGRAMA DE DESLOCAMENTOS



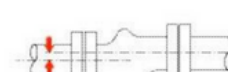
Compressão Axial / Axial Compression



Elongación Axial / Axial Elongation



Deflexión Angular / Angular Deflection



Desplazamiento Lateral / Lateral Displacement

Medida	Compressão Axial (mm)	Alongamento Axial (mm)	Deflexão Angular ($\alpha 1 + \alpha 2$)	Deslocamento Lateral (mm)
1 1/4"	10	6	15°	9
1 1/2"	10	6	15°	9
2"	10	7	15°	10
2 1/2"	13	8	15°	12
3"	15	8	15°	12
4"	19	12	15°	15
5"	19	12	15°	15
6"	20	12	10°	15
8"	20	12	10°	22
10"	28	16	10°	22
12"	28	16	10°	25
14"	28	16	10°	25
16"	28	16	10°	25
18"	28	16	10°	25
20"	28	16	10°	25

CURVA DA TEMPERATURA DA PRESSÃO

