

REF. 2831A



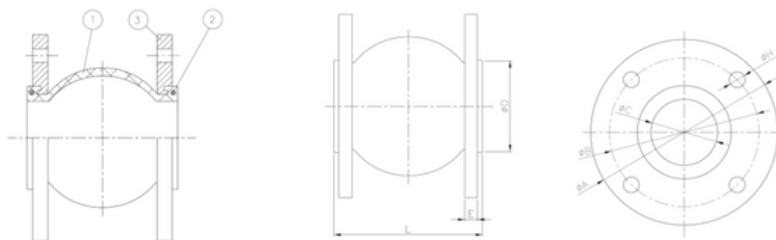
Junta de expansão de borracha

Corpo EPDM. ANSI 150 libras Flanges banhados a zinco. Pressão máxima de trabalho: 19 kg / cm². Temp: -10°C + 105°C.

Rubber expansion joint

Body: EPDM. Zinc plated ANSI 150 lbs flanges.

Max. working pressure: 19 kg/cm². Temp.: -10°C +105°C.
275 Psi -14°F + 221°F

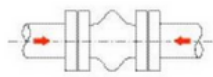


F2831A07ESGE	32	1 1/4"
F2831A08ESGE	40	1 1/2"
F2831A09ESGE	50	2"
F2831A10ESGE	65	2 1/2"
F2831A11ESGE	80	3"
F2831A12ESGE	100	4"
F2831A13ESGE	125	5"
F2831A14ESGE	150	6"
F2831A16ESGE	200	8"
F2831A18ESGE	250	10"
F2831A20ESGE	300	12"
F2831A22ESGE	350	14"
F2831A24ESGE	400	16"
F2831A26ESGE	450	18"
F2831A28ESGE	500	20"

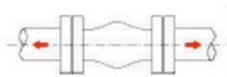
Nº	Descrição	Material	Tratamento Superficial
1	Corpo	EPDM + Nylon	-----
2	Anel	Aço Carbono	Zincado
3	Flange	Aço Carbono	Zincado

			DIMENSÕES (mm)								
MEDIDA	DN	PN	Ø A	Ø B	Ø C	Ø D	n x Ø H	L	E	PESO (Kg)	
1 1/4"	32	16	117.5	88.9	32	69	4 x 16	95	16	2.46	
1 1/2"	40	16	127	98.4	40	69	4 x 16	95	16	2.80	
2"	50	16	152.4	120.6	52	86	4 x 19	105	16	3.90	
2 1/2"	65	16	177.8	139.7	68	106	4 x 19	115	16	4.77	
3"	80	16	190.5	152.4	76	126	4 x 19	130	18	5.92	
4"	100	16	228.6	190.5	103	150	8 x 19	135	18	7.26	
5"	125	16	254	215.9	128	180	8 x 22	170	20	9.20	
6"	150	16	279.4	241.3	152	209	8 x 22	180	22	11.78	
8"	200	16	342.9	298.5	194	260	8 x 22	200	22	17.40	
10"	250	16	406.4	361.9	250	320	12 x 25.4	240	24	24.76	
12"	300	16	482.6	431.8	300	367	12 x 25.4	260	24	33.70	
14"	350	10	533.4	476.2	320	408	12 x 28.6	265	26	45.90	
16"	400	10	596.9	539.7	372	472	16 x 28.6	265	26	53.00	
18"	450	10	635	577.8	415	522	16 x 31.7	265	26	55.42	
20"	500	10	698.5	635	454	570	20 x 31.7	265	28	68.80	

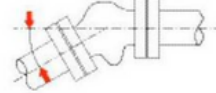
DIAGRAMA DE DESLOCAMENTOS



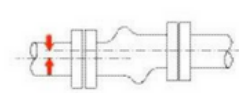
Compressão Axial / Axial Compression



Elongación Axial / Axial Elongation



Deflexión Angular / Angular Deflection



Desplazamiento Lateral / Lateral Displacement

Medida	Compressão Axial (mm)	Alongamento Axial (mm)	Deflexão Angular ($\alpha 1 + \alpha 2$)	Deslocamento Lateral (mm)
1 1/4"	10	6	15°	9
1 1/2"	10	6	15°	9
2"	10	7	15°	10
2 1/2"	13	8	15°	12
3"	15	8	15°	12
4"	19	12	15°	15
5"	19	12	15°	15
6"	20	12	10°	15
8"	20	12	10°	22
10"	28	16	10°	22
12"	28	16	10°	25
14"	28	16	10°	25
16"	28	16	10°	25
18"	28	16	10°	25
20"	28	16	10°	25

CURVA DA TEMPERATURA DA PRESSÃO

