

REF. 2833



**Junta de expansão de borracha-onda dupla EPDM**

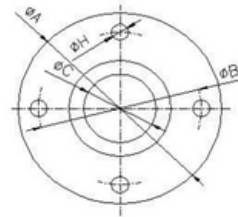
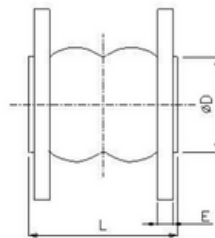
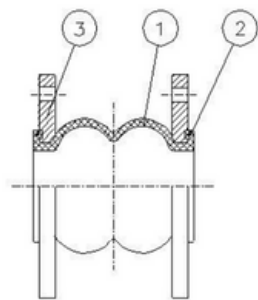
Corpo EPDM. Flanges zincadas DIN PN-10. Pressão máxima de trabalho: 10 BAR. Temp: -10°C + 105°C

**Rubber expansion joint-double wave EPDM**

Body: EPDM, zinc plated DIN 10 flanges.

Max. working pressure: 10 BAR. Temp.: -10°C +105°C.

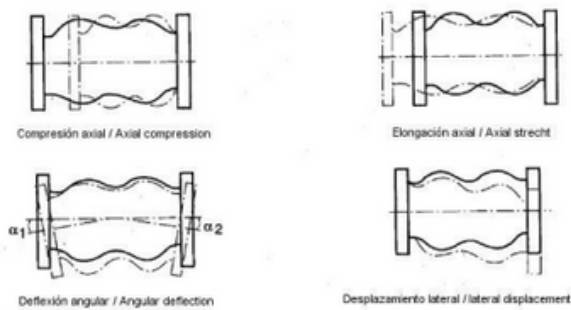
F283309ESGE	50	2"
F283310ESGE	65	2 1/2"
F283311ESGE	80	3"
F283312ESGE	100	4"
F283313ESGE	125	5"
F283314ESGE	150	6"
F283316ESGE	200	8"
F283318ESGE	250	10"
F283320ESGE	300	12"



Nº	Descrição	Material	Tratamento Superficial
1	Corpo	EPDM + Nylon	-----
2	Anel	Aço Carbono	Zincado
3	Flange	Aço Carbono	Zincado

DIMENSÕES (mm)										
MEDIDA	DN	PN	Ø A	Ø B	Ø C	Ø D	n x Ø H	L	E	PESO (Kg)
2"	50	16	165	125	58	86	4 x 18	175	16	4,40
2 1/2"	65	16	185	145	68	106	4 x 18	175	16	5,20
3"	80	16	200	160	76	116	8 x 18	175	18	6,30
4"	100	16	220	180	103	150	8 x 18	225	18	7,30
5"	125	16	250	210	128	180	8 x 18	225	20	10,20
6"	150	16	285	240	152	209	8 x 22	225	22	13,40
8"	200	10	340	295	194	260	8 x 22	325	22	18,90
10"	250	10	395	350	250	320	12 x 22	325	24	23,20
12"	300	10	445	400	300	367	12 x 22	325	24	28,60

## DIAGRAMA DE DESLOCAMENTOS



Medida	Compressão Axial (mm)	Alongamento Axial (mm)	Deflexão Angular ( $\alpha 1 + \alpha 2$ )	Deslocamento Lateral (mm)
2"	30	20	30°	45
2 1/2"	50	25	30°	45
3"	50	25	30°	45
4"	50	35	30°	35
5"	50	35	30°	35
6"	50	35	30°	35
8"	50	35	30°	30
10"	50	35	15°	30
12"	50	35	15°	30

## CURVA DA TEMPERATURA DA PRESSÃO

