

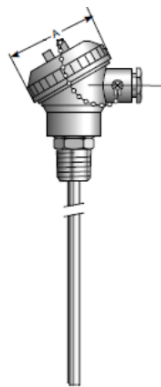
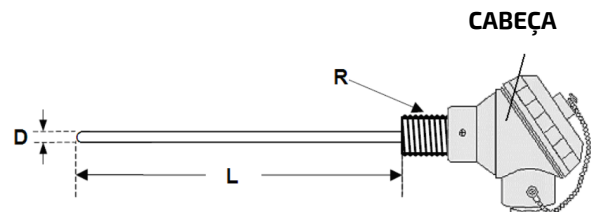
REF. 8050 - 8051 - 8052



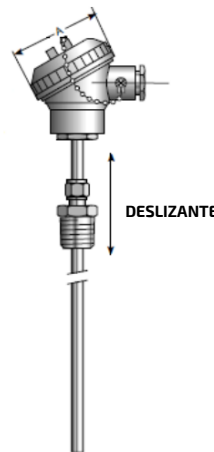
SONDA PT100 - 8050 / 8051 / 8052
 Sonda PT100 Rosca = 1/2" Diâmetro = 6 mm
 Elemento removível revestido/Cabeça roscada DIN BR - PN 16

PROBE PT100 - 8050 / 8051 / 8052
 Probe PT100 Thread = 1/2" Diameter = 6 mm/Element removable.
 Head DIN BR thread. PN 16.

F8050100ESGE	100 mm
F8051250ESGE	250 mm
F8052400ESGE	400 mm



Ref. 8050 100



Ref. 8051 250 / 8052 400

CONECTORES (1X3)

MOLAS E PARAFUSOS

DESLIZANTE

ELEMENTO INTERNO EXTRAÍVEL

SENSOR INTERNO PT100

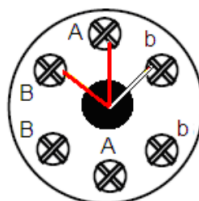
G

DIMENSÕES GERAIS:

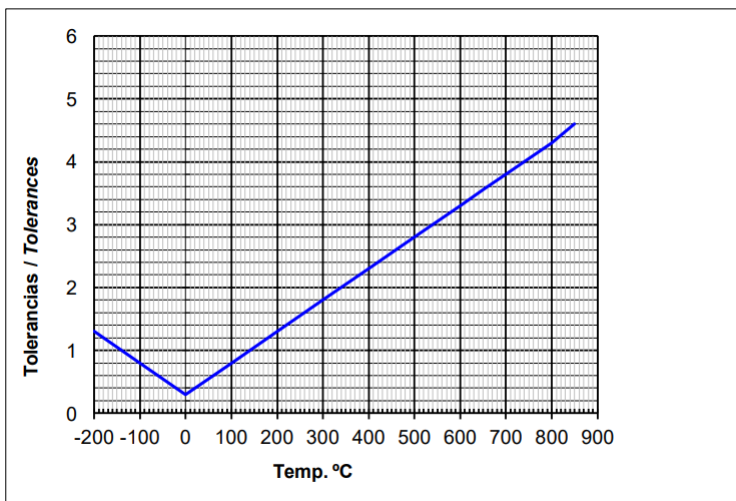
REF.	Ø A (mm)	Ø D (mm)	Ø G (mm)	L (mm)	R
8050 100	80	6	4	100	G 1/2"
8051 250	80	6	4	300	G 1/2"
8052 400	80	6	4	400	G 1/2"

CONEXÃO:

CABO	SINAL
A VERMELHO	RTD
B VERMELHO	RTD
b BRANCO	COMPENSAÇÃO



TOLERÂNCIAS DE PRECISÃO EM FUNÇÃO DA TEMPERATURA (CLASSE B):



TEMP. (°C)	TOLERÂNCIAS (°C)
-200	± 1.3
-100	± 0.8
0	± 0.3
100	± 0.8
200	± 1.3
300	± 1.8
400	± 2.3
500	± 2.8
600	± 3.3
650	± 3.6
700	± 3.8
800	± 4.3
850	± 4.6

INSTALAÇÃO EM DIFERENTES TIPOS DE TUBOS:

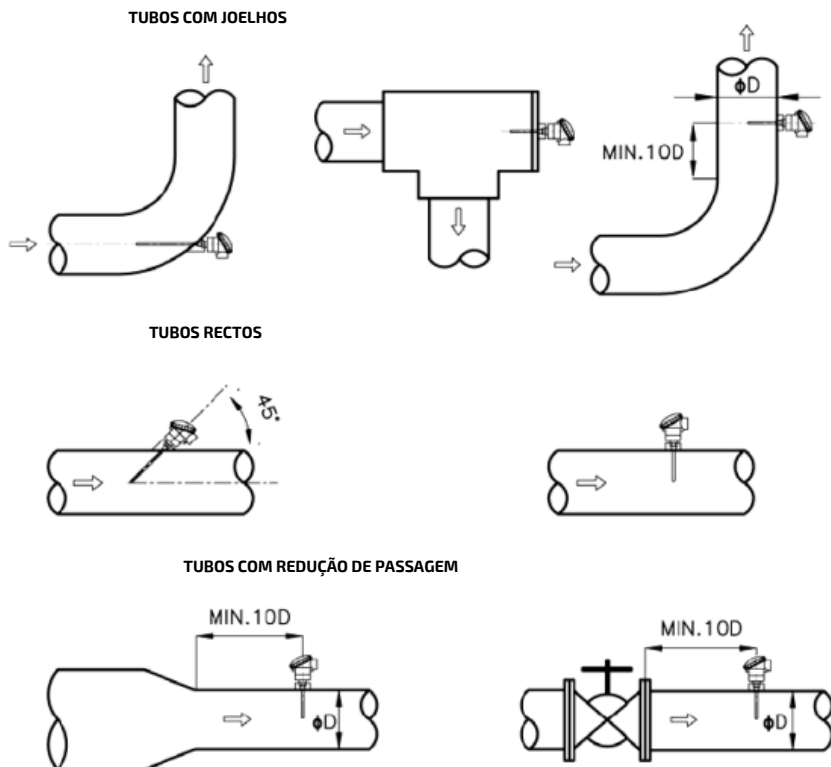


TABELA DE EQUIVALÊNCIAS TEMPERATURA - RESISTÊNCIA (Ohms):

°C	-200	-190	-180	-170	-160	-150	-140	-130	-120	-110
Ohms	18.52	22.78	27.01	31.24	35.45	39.65	43.78	47.90	52.01	56.11
°C	-100	-90	-80	-70	-60	-50	-40	-30	-20	-10
Ohms	60.20	64.23	68.25	72.26	76.26	80.25	84.22	88.18	92.13	96.07
°C	0	10	20	30	40	50	60	70	80	90
Ohms	100	103.90	107.79	111.67	115.54	119.40	123.24	127.07	130.89	134.70
°C	100	110	120	130	140	150	160	170	180	190
Ohms	138.50	142.29	146.06	149.83	153.58	157.32	161.05	164.76	168.47	172.16
°C	200	210	220	230	240	250	260	270	280	290
Ohms	175.84	179.51	183.17	186.82	190.46	194.08	197.69	201.29	204.88	208.46
°C	300	310	320	330	340	350	360	370	380	390
Ohms	212.03	215.59	219.13	222.66	226.18	229.69	233.19	236.67	240.15	243.61
°C	400	410	420	430	440	450	460	470	480	490
Ohms	247.06	250.50	253.93	257.34	260.75	264.14	267.52	270.89	274.25	277.60
°C	500	510	520	530	540	550	560	570	580	590
Ohms	280.93	284.25	287.56	290.86	294.15	297.43	300.70	303.95	307.20	310.43
°C	600	610	620	630	640	650	660	670	680	690
Ohms	313.65	316.86	320.05	323.24	326.41	329.57	332.72	335.86	338.99	342.11