

REF. 8058 - 8059 - 8060



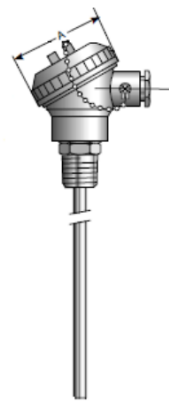
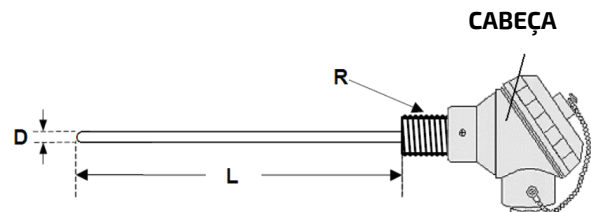
SONDA PT100 - 8058 / 8059 / 8060

Sonda PT100 Rosca = 1/2" Diâmetro = 6 mm
Elemento removível revestido/Cabeça roscada DIN BR - PN 16

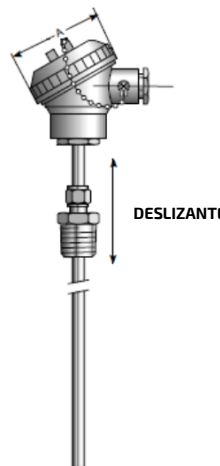
PROBE PT100 - 8058 / 8059 / 8060

Probe PT100 Thread = 1/2" Diameter = 6 mm/Element removable.
Head DIN BR thread. PN 16.

| | |
|--------------|--------|
| F8058100ESGE | 100 mm |
| F8059250ESGE | 250 mm |
| F8060400ESGE | 400 mm |



Ref. 8058 100



Ref. 8059 250 / 8060 400

CONECTORES (2X3)

MOLAS E PARAFUSOS

SENSOR INTERNO PT100

ELEMENTO INTERNO EXTRAÍVEL

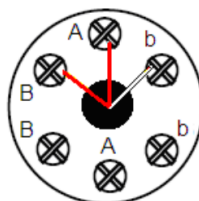
G

DIMENSÕES GERAIS:

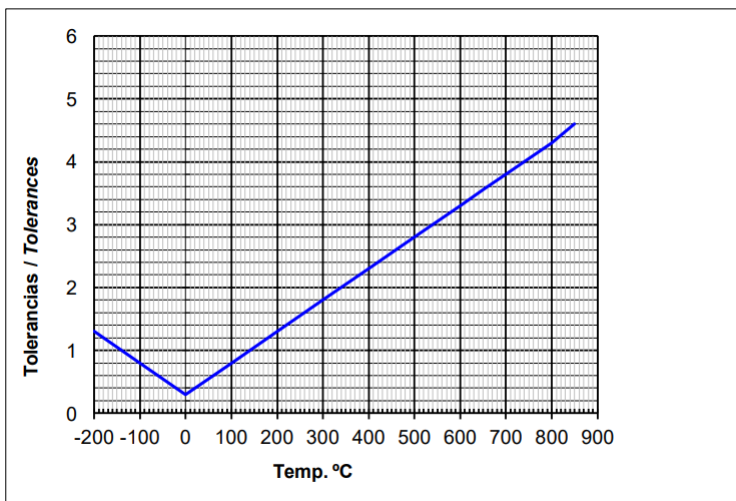
| REF. | Ø A (mm) | Ø D (mm) | Ø G (mm) | L (mm) | R |
|----------|----------|----------|----------|--------|--------|
| 8058 100 | 80 | 6 | 4 | 100 | G 1/2" |
| 8059 250 | 80 | 6 | 4 | 300 | G 1/2" |
| 8060 400 | 80 | 6 | 4 | 400 | G 1/2" |

CONEXÃO:

| CABO | SINAL |
|--------------|-------------|
| A 2 VERMELHO | RTD |
| B 2 VERMELHO | RTD |
| b 2 BRANCO | COMPENSAÇÃO |



TOLERÂNCIAS DE PRECISÃO EM FUNÇÃO DA TEMPERATURA (CLASSE B):



| TEMP. (°C) | TOLERÂNCIAS (°C) |
|------------|------------------|
| -200 | ± 1.3 |
| -100 | ± 0.8 |
| 0 | ± 0.3 |
| 100 | ± 0.8 |
| 200 | ± 1.3 |
| 300 | ± 1.8 |
| 400 | ± 2.3 |
| 500 | ± 2.8 |
| 600 | ± 3.3 |
| 650 | ± 3.6 |
| 700 | ± 3.8 |
| 800 | ± 4.3 |
| 850 | ± 4.6 |

INSTALAÇÃO EM DIFERENTES TIPOS DE TUBOS:

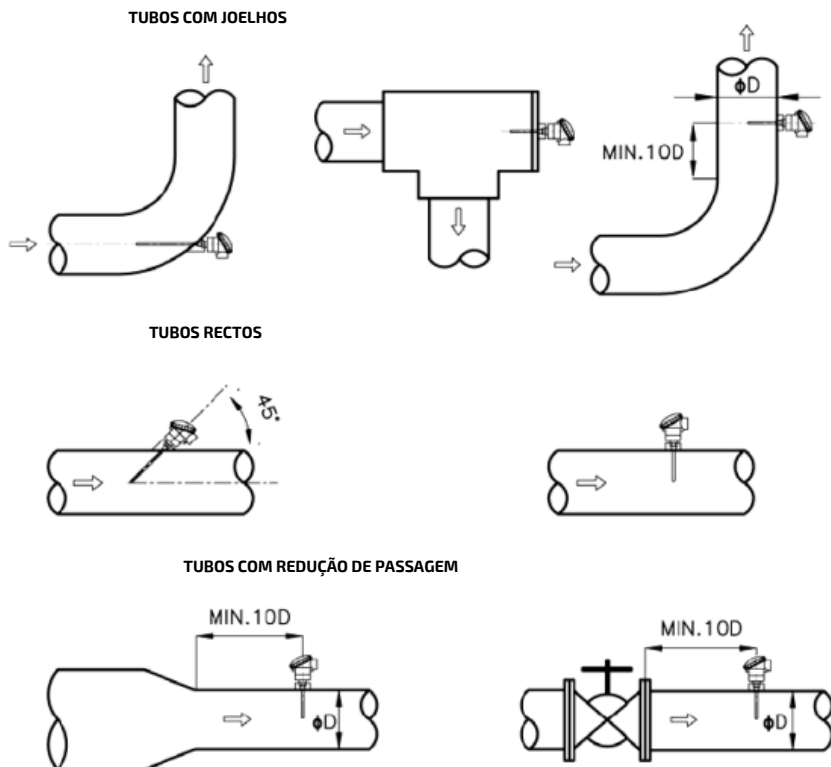


TABELA DE EQUIVALÊNCIAS TEMPERATURA - RESISTÊNCIA (Ohms):

| | | | | | | | | | | |
|------|--------|--------|--------|--------|--------|--------|--------|--------|--------|--------|
| °C | -200 | -190 | -180 | -170 | -160 | -150 | -140 | -130 | -120 | -110 |
| Ohms | 18.52 | 22.78 | 27.01 | 31.24 | 35.45 | 39.65 | 43.78 | 47.90 | 52.01 | 56.11 |
| °C | -100 | -90 | -80 | -70 | -60 | -50 | -40 | -30 | -20 | -10 |
| Ohms | 60.20 | 64.23 | 68.25 | 72.26 | 76.26 | 80.25 | 84.22 | 88.18 | 92.13 | 96.07 |
| °C | 0 | 10 | 20 | 30 | 40 | 50 | 60 | 70 | 80 | 90 |
| Ohms | 100 | 103.90 | 107.79 | 111.67 | 115.54 | 119.40 | 123.24 | 127.07 | 130.89 | 134.70 |
| °C | 100 | 110 | 120 | 130 | 140 | 150 | 160 | 170 | 180 | 190 |
| Ohms | 138.50 | 142.29 | 146.06 | 149.83 | 153.58 | 157.32 | 161.05 | 164.76 | 168.47 | 172.16 |
| °C | 200 | 210 | 220 | 230 | 240 | 250 | 260 | 270 | 280 | 290 |
| Ohms | 175.84 | 179.51 | 183.17 | 186.82 | 190.46 | 194.08 | 197.69 | 201.29 | 204.88 | 208.46 |
| °C | 300 | 310 | 320 | 330 | 340 | 350 | 360 | 370 | 380 | 390 |
| Ohms | 212.03 | 215.59 | 219.13 | 222.66 | 226.18 | 229.69 | 233.19 | 236.67 | 240.15 | 243.61 |
| °C | 400 | 410 | 420 | 430 | 440 | 450 | 460 | 470 | 480 | 490 |
| Ohms | 247.06 | 250.50 | 253.93 | 257.34 | 260.75 | 264.14 | 267.52 | 270.89 | 274.25 | 277.60 |
| °C | 500 | 510 | 520 | 530 | 540 | 550 | 560 | 570 | 580 | 590 |
| Ohms | 280.93 | 284.25 | 287.56 | 290.86 | 294.15 | 297.43 | 300.70 | 303.95 | 307.20 | 310.43 |
| °C | 600 | 610 | 620 | 630 | 640 | 650 | 660 | 670 | 680 | 690 |
| Ohms | 313.65 | 316.86 | 320.05 | 323.24 | 326.41 | 329.57 | 332.72 | 335.86 | 338.99 | 342.11 |