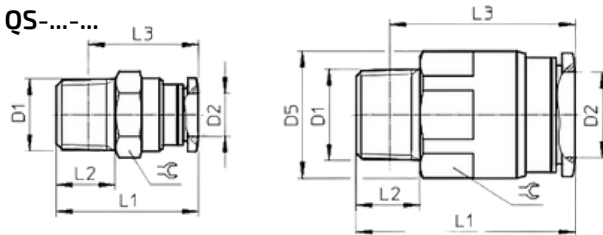
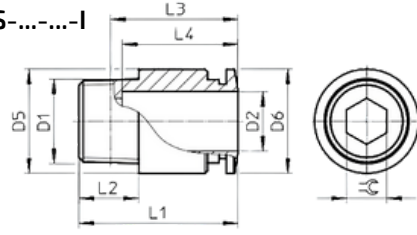


UNIÃO DE ENCAIXE QS

QS-....-...



QS-....-...-I



QS-....-...

Conexão Pneumática		Largura Nominal (mm)	Dimensões (mm)					Peso (g)	Cód.	Ref.
Rosca Macho (D1)	P/ Tubo O.B. (D2)		D	L1	L2	L3				
R1/8	4	3	-	21	8	17	10	7.4	153001	QS-1/8-4
	6	5	-	22.3	8	18.3	12	8.2	153002	QS-1/8-6
	8	6	-	27.9	8	23.9	14	14	153004	QS-1/8-8
	10	6	-	30.3	8	26.3	17	21	190643	QS-1/8-10
R1/4	4	3	-	22.5	11	16.5	14	16	190644	QS-1/4-4
	6	5	-	23.7	11	17.6	14	15	153003	QS-1/4-6
	8	7	-	26.6	11	20.6	14	14	153005	QS-1/4-8
	10	8.5	-	29.8	11	23.8	17	19	153007	QS-1/4-10
	12	8.5	-	35.9	11	29.9	21	37	164980	QS-1/4-12
R3/8	6	5	-	24.5	12	18.1	17	28	190645	QS-3/8-6
	8	7	-	25.5	12	19.2	17	25	153006	QS-3/8-8
	10	9	-	29.3	12	23	17	24	153008	QS-3/8-10
	12	11	-	31.9	12	25.6	21	30	153009	QS-3/8-12
	16	11	23.8	41.1	12	34.8	22	50	164957	QS-3/8-16
R1/2	10	9	-	30.4	15	22.2	21	46	190646	QS-1/2-10
	12	11	-	33.9	15	25.7	21	44	153010	QS-1/2-12
	16	13	-	41.3	15	33.1	24	63	153011	QS-1/2-16

QS-....-...-I

Conexão Pneumática		Largura Nominal (mm)	Dimensões (mm)								Peso (g)	Cód.	Ref.
Rosca Macho (D1)	P/ Tubo O.B. (D2)		D5 Ø	D6 Ø	L1	L2	L3	L4	L5				
R1/8	4	2.6	9.7	9.9	20	8	16	14.9	-	2.5	6.6	153012	QS-1/8-4-I
	6	4.2	11.8	11.8	22.1	8	18.1	17	-	4	7.6	153013	QS-1/8-6-I
	8	5.3	13.7	13.8	25.9	8	21.9	18.2	-	5	8.8	153015	QS-1/8-8-I
	10	5.3	17.5	16.8	30.3	8	26.3	20.7	-	5	17	190647	QS-1/8-10-I
R1/4	6	4.2	13.7	11.8	21.3	11	15.2	17	-	4	13	153014	QS-1/4-6-I
	8	6.3	13.7	13.8	25.1	11	19.1	18.2	-	6	13	153016	QS-1/4-8-I
	10	6.3	17.5	16.8	29.8	11	23.8	20.7	-	6	20	153018	QS-1/4-10-I
	12	6.3	20.8	19.8	35.9	11	29.9	23.3	-	6	29	190649	QS-1/4-12-I
R3/8	8	6.3	16.8	13.8	22.2	12	15.9	18.2	-	6	19	153017	QS-3/8-8-I
	10	6.3	17.5	16.8	29.3	12	23	20.7	-	6	26	153019	QS-3/8-10-I
	12	8.4	20.8	19.8	31.9	12	25.6	23.3	-	8	31	153020	QS-3/8-12-I
R1/2	10	6.3	20.8	16.8	30.3	15	22.1	20.7	-	6	45	190648	QS-1/2-10-I
	12	8.4	20.8	19.8	33.9	15	25.7	23.3	-	8	45	153021	QS-1/2-12-I