

# PERFIS EM ALUMÍNIO



# SISTEMAS MODULARES

Os perfis de alumínio são barras ou peças longas de alumínio que foram extrudidas em várias formas geométricas. A extrusão é um processo em que o alumínio é forçado através de uma matriz para criar uma secção transversal específica. Este processo permite a criação de perfis com formas complexas e precisas, como perfis em "T", "L", "U", quadrados, retangulares, ou com designs mais personalizados.

Características dos Perfis de Alumínio:

- Leveza
- Resistência à corrosão
- Durabilidade
- Versatilidade
- Sustentabilidade

## GLOSSÁRIO



Largura da ranhura do perfil



Largura da ranhura do perfil



Largura da ranhura do perfil



Largura da ranhura do perfil



Execução de perfis para cargas menores



Execução de perfis para cargas maiores



Execução de perfis com raio



C1

Perfil fechado de um lado

C2

Perfil fechado em ambos os lados

M4

M8

M16

Roscas destinadas

M10

M12

Roscas opcionais

Nm

Momento



O elemento é inserido na ranhura nas extremidades do perfil



O elemento é inserido em qualquer lugar da ranhura do perfil



O elemento é inserido em qualquer lugar na ranhura do perfil e girado em 90°



Massa do produto, em gramas



Chave hex

Fe

Aço

Inox

Aço Inoxidável

Zn

Liga de Zinco

Zn  
Fe

Aço Zincado

Cu  
Zn

Produto de Latão - Niquelado

Al  
Ei

Liga de Alumínio - anodizado

Al

Liga de Alumínio



PA6

Poliamida 6

PA6  
#

Poliamida 6 com fibras de vidro

PE  
500

Polietileno

PP

Polipropileno

PP  
TPE

Polipropileno + elastómero termoplástico

TPE

Elastómero termoplástico

NBR

Borracha nitrílica



Borracha antiderrapante

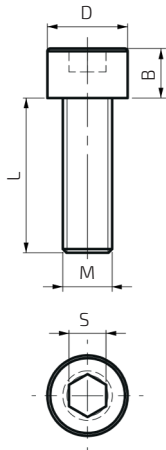



ESD - material antiestático

NEW

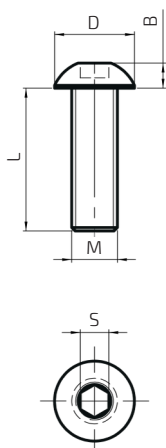
Novo produto


## Parafuso de cabeça cilíndrica



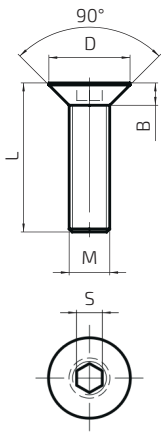
Zn Fe	M	L	D	B	S		Cód.
	4	40	6.8	4	3	4 g	11026
	5	16	8.3	5	4	4 g	11001
	5	20	8.3	5	4	4 g	11002
	6	14	9.8	6	5	5 g	11003
	6	16	9.8	6	5	6 g	11004
	6	20	9.8	6	5	6 g	11005
	6	30	9.8	6	5	8 g	11006
	8	16	12.7	8	6	11 g	11007
	8	20	12.7	8	6	13 g	11008
	8	25	12.7	8	6	14 g	11009
	8	40	12.7	8	6	19 g	11010

## Parafuso de cabeça lenticular



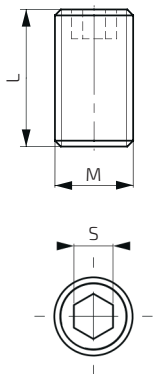
Zn Fe	M	L	D	B	S		Cód.
	5	10	9.5	2.8	3	2 g	11011
	5	12	9.5	2.8	3	2 g	11012
	5	16	9.5	2.8	3	3 g	11013
	5	20	9.5	2.8	3	3 g	11014
	5	25	9.5	2.8	3	4 g	11015
	6	10	10.5	3.3	4	3 g	11016
	6	12	10.5	3.3	4	3 g	11017
	6	16	10.5	3.3	4	4 g	11018
	6	20	10.5	3.3	4	5 g	11019
	6	25	10.5	3.3	4	5 g	11020
	8	10	14	4.4	5	6 g	11021
	8	14	14	4.4	5	8 g	11022
	8	20	14	4.4	5	9 g	11023
	8	25	14	4.4	5	11 g	11024
	8	30	14	4.4	5	13 g	11025

## Parafuso de encaixe



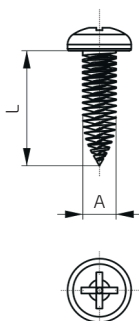
Zn Fe	M	L	D	B	S		Cód.
	5	16	12	4	4	4 g	11164
	5	20	12	4	4	4 g	11165
	6	12	12	4	4	4 g	11162
	6	16	12	4	4	4 g	11027
	6	20	12	4	4	4 g	11028
	8	25	16	5	5	10 g	11029
	8	35	16	5	5	13 g	11030

## Pino roscado



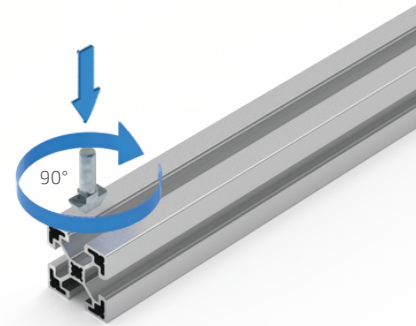
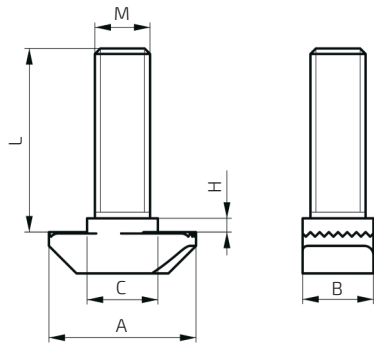
Zn Fe	M	L	S		Cód.
	6	8	4	2 g	11031
	6	14	4	2 g	11032
	8	10	5	2 g	11033
	8	14	5	3 g	11034
	8	40	5	11 g	11035

## Parafuso auto-roscante



Zn Fe	A	L		Cód.
	Ø5.5	19	4 g	11036

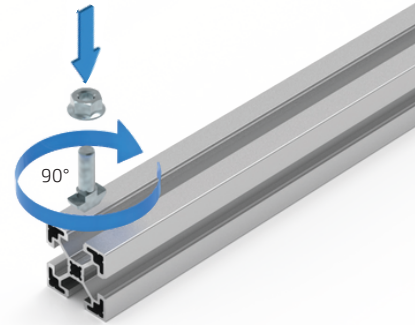
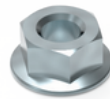
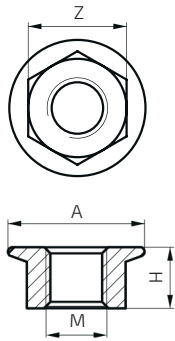
## Parafuso de cabeça de martelo



Zn Fe	8/10	M	L	B	C	A	H		Cód.
		6	20	7.7	7.7	16	1.5	7 g	11037*
		6	25	7.7	7.7	16	1.5	8 g	11038*
		6	30	7.7	7.7	16	1.5	9 g	11039*
		6	40	7.7	7.7	16	1.5	10 g	11040*
		6	60	7.7	7.7	16	1.5	10 g	11041*
		6	20	9.7	9.7	19	3	10 g	11042*
		6	25	9.7	9.7	19	3	12 g	11043*
		6	30	9.7	9.7	19	3	13 g	11044*
		6	40	9.7	9.7	19	3	15 g	11045*
		6	60	9.7	9.7	19	3	18 g	11046*
		8	20	8.5	9.7	19	3	13 g	11047
		8	25	8.5	9.7	19	3	14 g	11048
		8	30	9.7	9.7	19	3	15 g	11049*
		8	40	9.7	9.7	19	3	19 g	11050*
		8	60	9.7	9.7	19	3	25 g	11051*

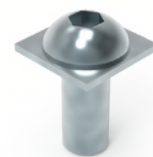
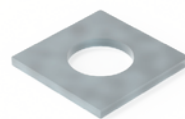
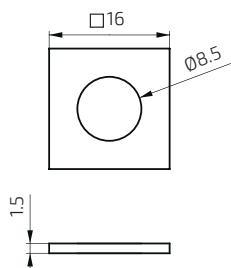
\* montado

## Porca flangeada



Zn Fe	M	A	H	Z		Cód.
	6	Ø14.2	6	10	4 g	11139
	8	Ø17.9	8	13	7 g	11052

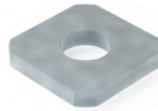
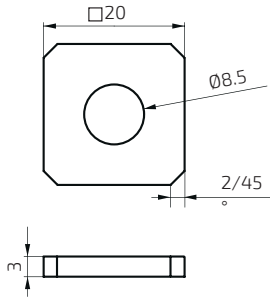
## Anilha – ranhurada, quadrada U8



Zn Fe			Cód.
	8	2 g	11053



## Anilha - ranhurada, quadrada, baixa U10



Zn  
Fe

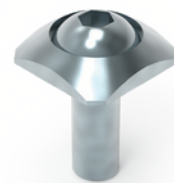
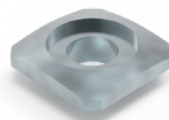
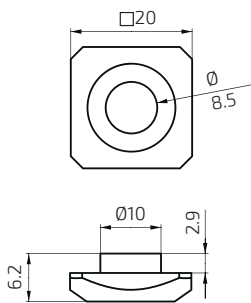


Cód.

6 g

11166

## Anilha - ranhurada U10



Zn  
Fe

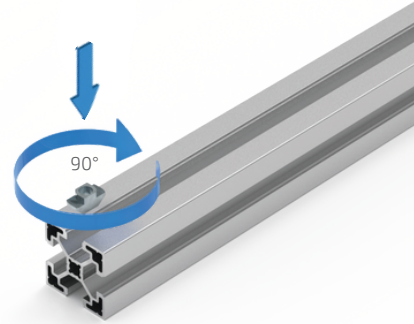
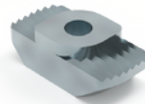
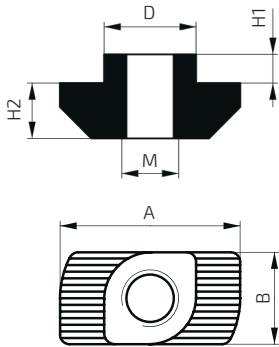


Cód.

10 g

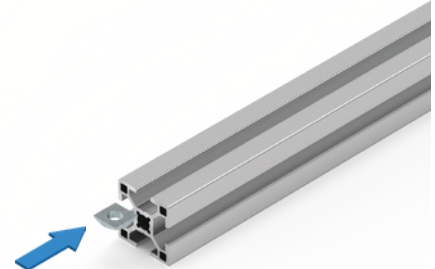
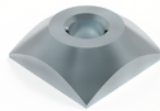
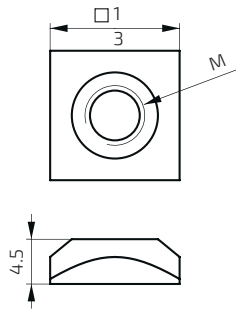
11054


## Porca cabeça de martelo



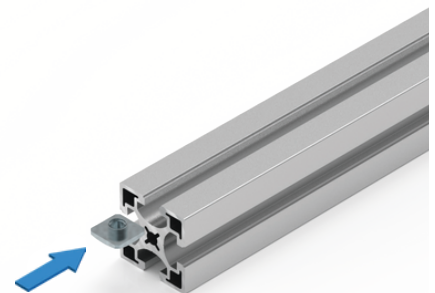
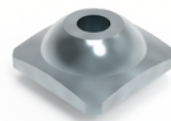
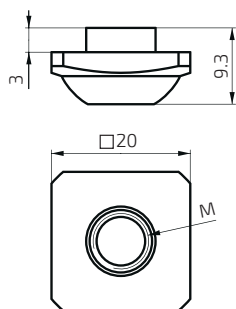
Zn Fe	8/10	M	A	B	H1	H2	D		Cód.	
		8	4	16	7.7	1.5	4.5	7.7	4 g	11055
		8	5	16	7.7	1.5	4.5	7.7	3 g	11056
		8	6	16	7.7	1.5	4.5	7.7	3 g	11057
		10	4	19	9.7	3	5.8	9.7	8 g	11058
		10	5	19	9.7	3	5.8	9.7	7 g	11059
		10	6	19	9.7	3	5.8	9.7	7 g	11060
		10	8	19	9.7	3	5.8	9.7	6 g	11061


## Porca - ranhurada



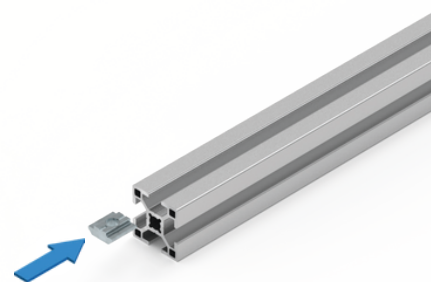
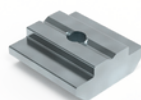
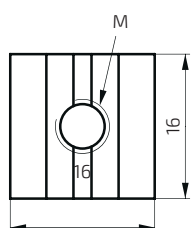
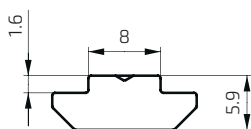
Zn Fe	8	M		Cód.
		5	5 g	11062
		6	5 g	11063
		8	4 g	11064

## Porca - ranhurada



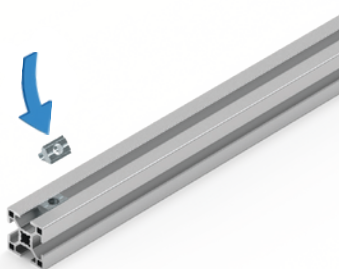
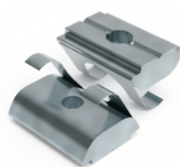
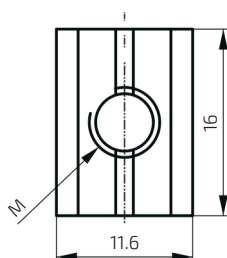
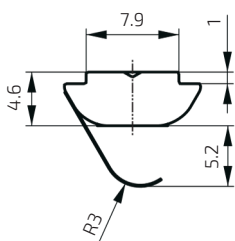
Zn Fe	10	M		Cód.
		6	18 g	11065
		8	15 g	11066

## Porca com fenda em T



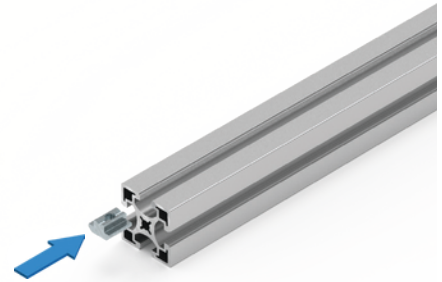
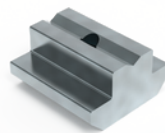
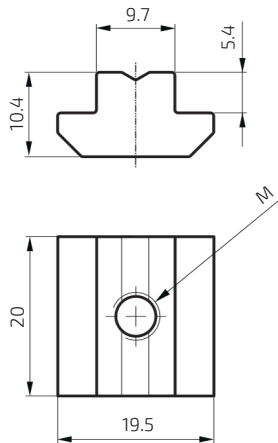
Zn Fe	8	M	g	Cód.
		4	9 g	11067
		5	8 g	11068
		6	8 g	11069
		8	7 g	11070


## Porca ranhura em T com mola



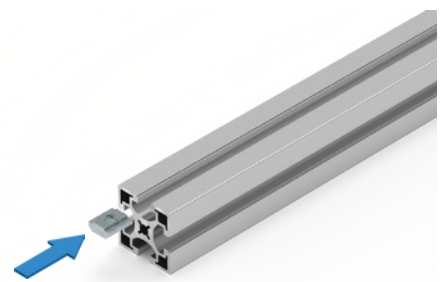
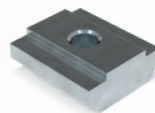
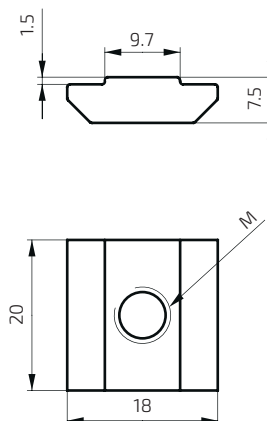
Zn Fe	8	M	g	Cód.
		4	5 g	11071
		5	5 g	11072
		6	4 g	11073
		8	4 g	11074


## Porca com fenda em T



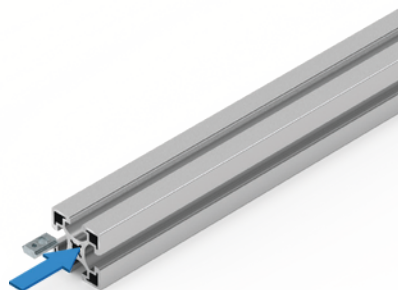
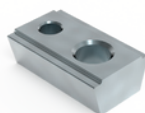
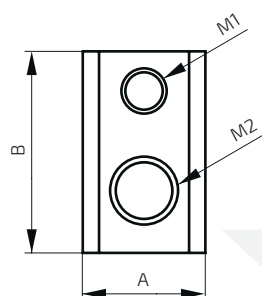
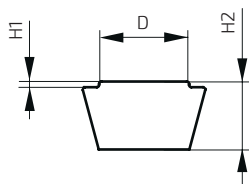
Zn Fe	10	M		Cód.
		4	22 g	11075
		5	21 g	11076
		6	20 g	11077
		8	19 g	11078

## Porca com fenda em T - baixa



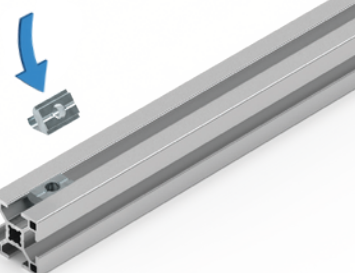
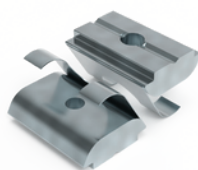
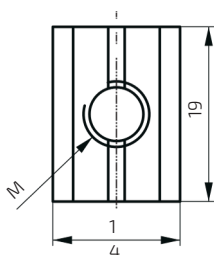
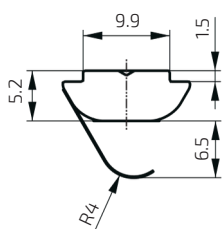
Zn Fe	10	M		Cód.
		6	16 g	11168
		8	14 g	11169

## Porca com ranhura em T baixa - Reparar



Zn Fe	8/10	M1	M2	A	B	D	H1	H2	📦	Cód.
		4	6	10.8	17.8	7.9	0.5	6	4 g	11170
		4	8	14.1	20	9.9	1.5	6	8 g	11171

## Porca ranhura em T com mola



Zn Fe	10	M	📦	Cód.
		4	8 g	11079
		5	8 g	11080
		6	8 g	11081
		8	7 g	11082